

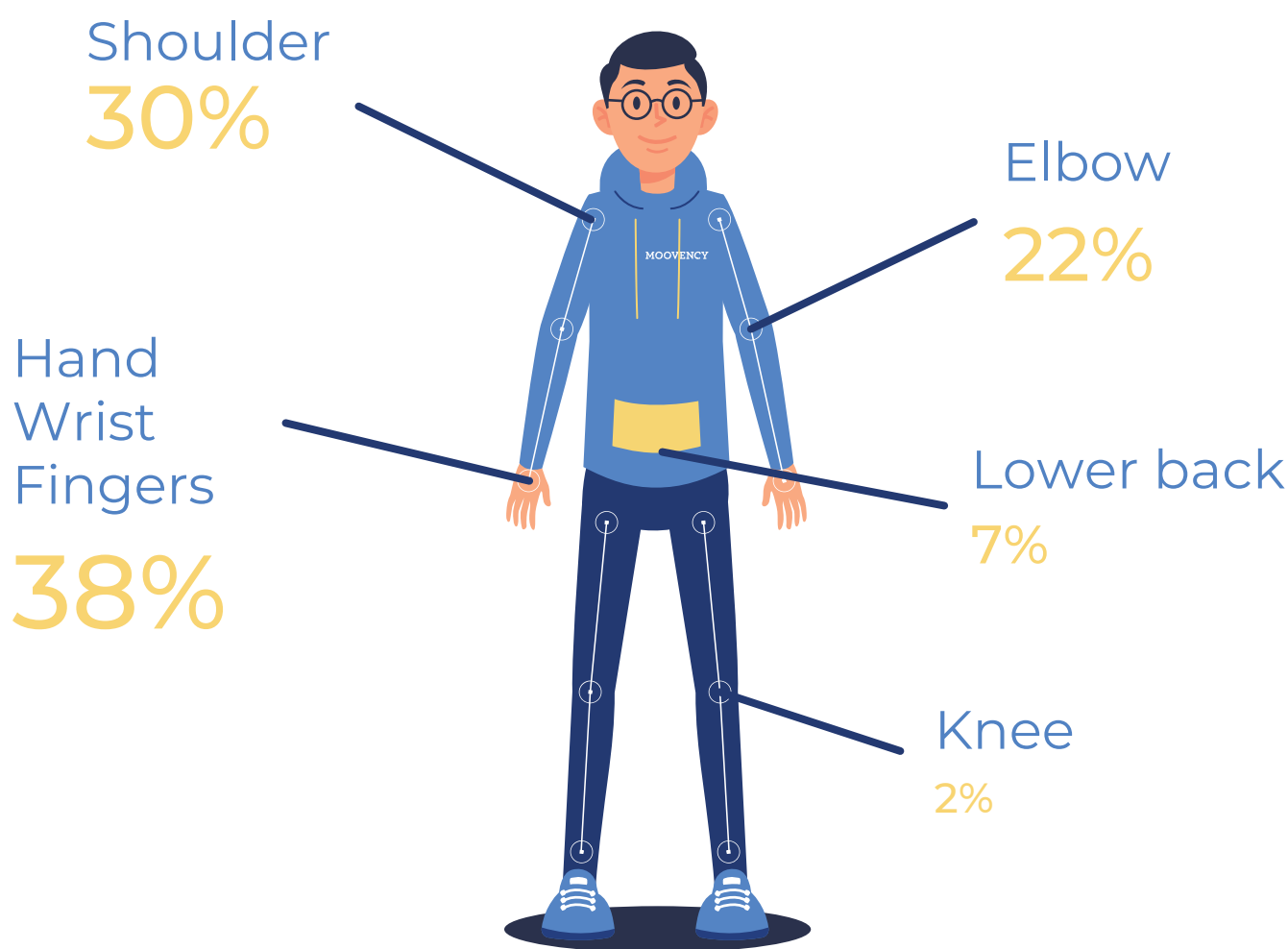
# MOOVENCY

## MSDs in figures

Musculoskeletal Disorders (MSDs) affect the structures around joints and most commonly occur in the back or upper limbs. These conditions impact muscles, tendons, and nerves. Several factors, particularly occupational ones, contribute to the development of these disorders.

Source : Ameli.fr

### Parts of the body most affected by MSDs



# Number 1 cause of absence from work in France

21 512€

The average cost of a MSD

87%

of recognized occupational illnesses are MSDs



days off work on average for back pain-related accidents

30%

of work stoppages are caused by an MSD

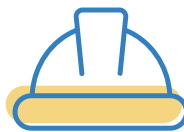


work days lost due to MSDs

## The sectors most affected



Transport and logistics



Building and civil engineering



Food industry



Stores



Metallurgy



Personal assistance



Cleanliness

## TRANSPORT AND LOGISTICS



95%

The proportion of MSDs among recognized occupational diseases

15%

of work-related accidents in the sector are linked to back pain

860 000

lost working days, i.e. over 4,000 full-time equivalents

## BUILDING AND CIVIL ENGINEERING



98%

The proportion of MSDs among recognized occupational diseases

10%

of work-related accidents in the sector are linked to back pain

1,8 MILLION

lost working days, or more than 8,500 full-time equivalents

## FOOD INDUSTRY



97%

The proportion of MSDs among recognized occupational diseases

10%

of work-related accidents in the sector are linked to back pain

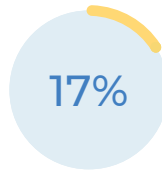
930 000

working days lost, or more than 4,300 full-time equivalents

## STORES



The proportion of MSDs among recognized occupational diseases

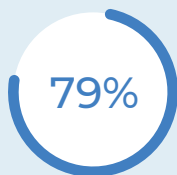


of work-related accidents in the sector are linked to back pain

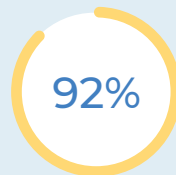
1,5 MILLION

lost working days, i.e. over 4,000 full-time equivalents

## METALLURGY



The proportion of MSDs among recognized occupational diseases



MSDs in the sector affect the upper limbs of the body

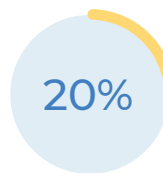
2,7 MILLION

Lost workdays amounting to over 12,500 full-time equivalents

## PERSONAL ASSISTANCE



The proportion of MSDs among recognized occupational diseases

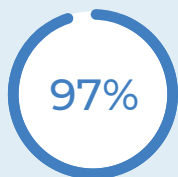


of work-related accidents in the sector are linked to back pain

2,3 MILLION

lost working days, i.e. more than 10,000 full-time equivalents

## CLEANLINESS



The proportion of MSDs among recognized occupational diseases



of work-related accidents in the sector are linked to back pain

440 000

lost working days, i.e. more than 2,000 full-time equivalents